

## Running Web Server on your PDA

Today having a Web Server is banal. Most of us have been using IIS (Internet Information Server), Personal Web Server of Microsoft, Apache or other. But these days we can even set up a Web server on a PDA. Is it useless or not to have it and what to do with it is not the point of my Tutorial. As you are going to see it is defiantly the most easies Tutorial ever. In fact this is not a tutorial it is just a resume.

First of all I have to thank Robin Brouwer from Newmad.se for making it. It is a great product very easy to install and use. For more info on Newmad products visit [www.newmad.se](http://www.newmad.se).

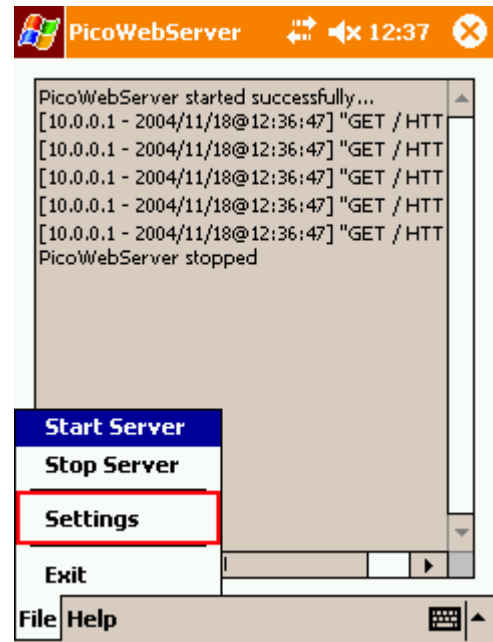


Let's start with the installation. Get you free product copy for there web site <http://www.newmad.se/software.asp> after connect you PDA and double click the downloaded file. In few seconds you PDA will be ready.

Start your Web Server by clicking **Start** | **Programs** | the program icon



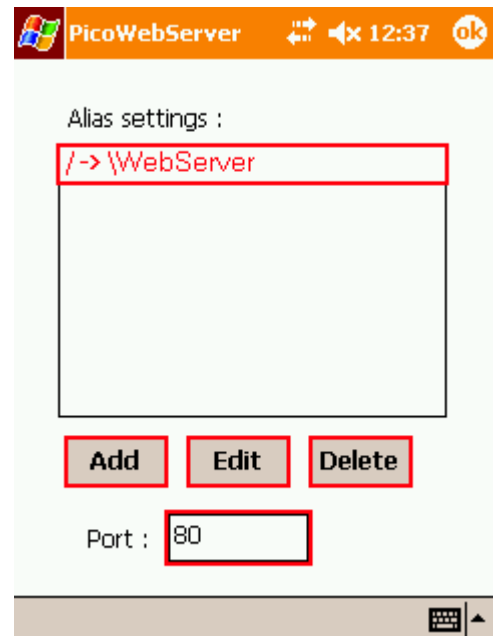
In the PicoWebServer screen click **File**  
| **Settings**



In the Settings screen you have your default alias "/" and the absolute folder for the Web Server's root files in my case "\\WebServer". You default page have to be **index.htm**

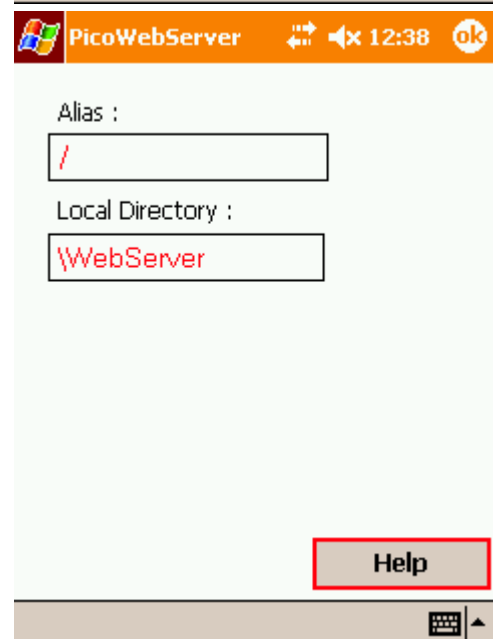
You can Add, Edit or Delete and change the default Server port "80"

In my Internet Explorer Address Bar if I type the IP address of my PDA (**http://10.0.0.2/**) I will see the default page.



This is the Alias edit screen if you have to change the folder.

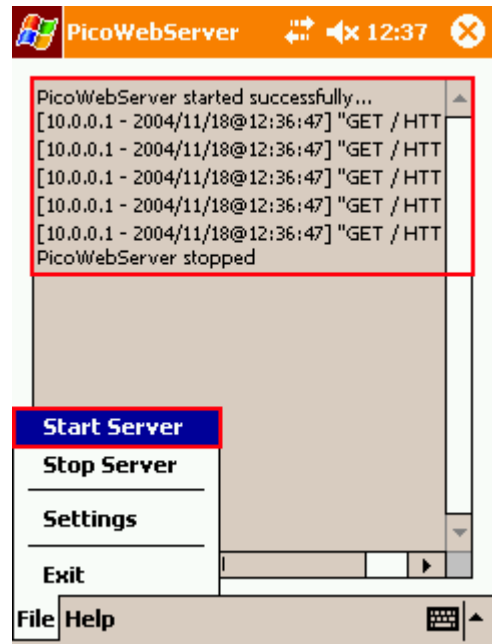
*\* I had problem with the installation as I installed the Web Server on the SD Card the Local Directory was wrong. If the server can't find the index.htm it just discard your request.*



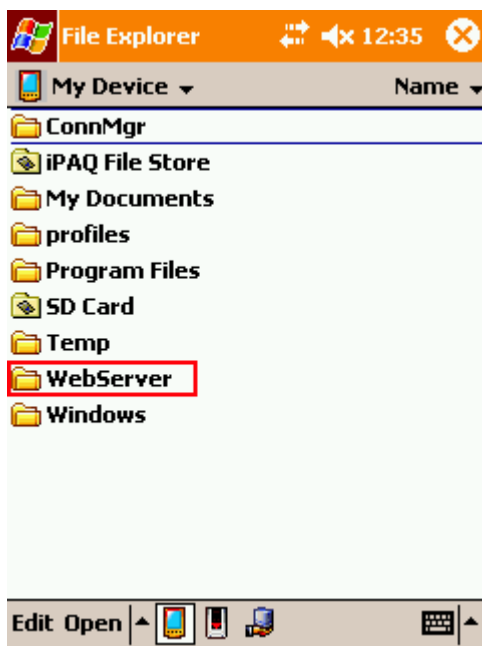
If your **Settings** are ready start you Server. **File | Start Server**

*\* If you ave started your server and you make changes you have to restart it. **File | Stop Server** and then **File | Start Server***

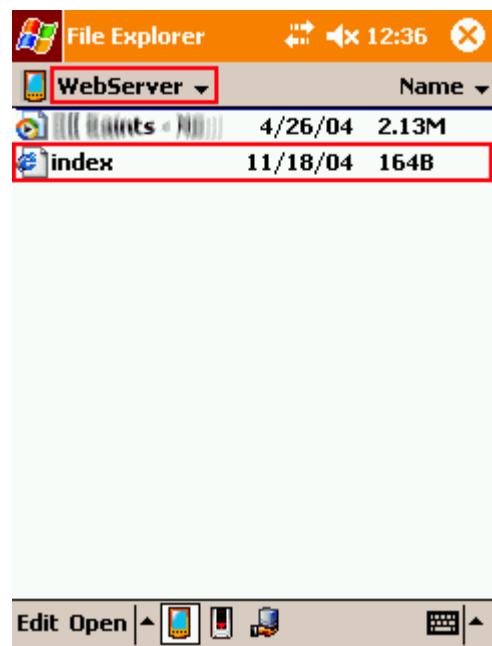
You can see few GET Requests I made in the Programs main screen. It shows you the **IP** connecting. The Server's **Time / Data** and the full "GET ..."



My device Web Server root



Root folder files



This is all. Enjoy your Web Server and again Thanks to Newmad for making this possible.

Imagine what can be done with a Web Server one PDA.